

Si-82 PACK 1

SI82CE04UN23

Si-82 500 l/h

Ph > 2.5



- ⊕ 5m
- ⊕ 500 l/h
- ⊕ -

Features

Flow rate	132 gph
Head	16 ft
Power	230V ~ 50Hz - 70W - 0.67A
Duty cycle	30%: 3s ON - 7s OFF
Control	ph > 2.5
Protection	IP20
Warranty	4
Terminal	NC4 A resistive - 250V
Switch	integrierter Schwimmerschalter
Temperature	105°C (Auto-reset)

Specifications

at 3,3ft or 1m in application (dBA)

<= 45

Connections

24mm
 Ø ext. 10 mm (3/8")
 & (1.5m, bare ends)

□□ □ ext. 10 mm (3/8") - □ ext. 6 mm (1/4")
2□□□ + 2 □□□

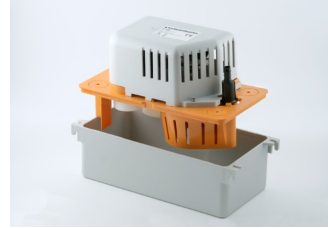
Pump technology

Centrifugal tank pump

Installation

Floor mounted
Hung from ceiling
Remote above unit
Wall mounted

Extra product images



Air conditioning



CE



RO
HS
WE
EE

Com
plia
nt

in

Source URL: <https://sauermanngroup.com.cn/zh-hans/product/pump/si-82-pack-1ch>